

## LED RECESSED WALL LIGHT



### Description

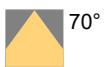
Crate series of recessed lighting fixtures are available with louvre to reduce the glare of direct lighting. This model is designed to illuminate: stairs, driveways or Walkways and since it has indirect lighting illumination, so it can be a good option where you have a wall close to the walk or driveways. The body of the light is made of high powder coated die-casting aluminum which is subjected to treatment and finished with textured powder paint, making the product resistant to moisture and UV rays, guaranteeing maximum protection over the years. Silicone gaskets ensure maximum sealing in all humidity and temperatures. All external screws are made of stainless steel. The diffuser of this light is made of tempered glass, to guarantee the maximum and uniform distribution of light. The light is installed in a sleeve made of PVC.

### Correlated Color Temperature (CCT)

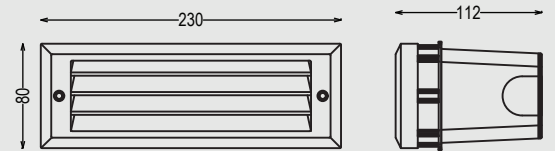
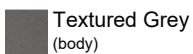


\*Other color temperatures (CCT) can be made as per order.

### Beam Angle



### Color Finish



### Electrical Features

<b>Wattage</b>	10W
<b>Light Source</b>	CREE SMD LED
<b>Output Lumen</b>	700lm (3000K)
<b>Input Voltage</b>	220-240V AC, 50-60Hz
<b>Color Rendering Index</b>	CRI >80
<b>LED Life Span</b>	>50,000Hrs
<b>Control</b>	ON / OFF

### Mechanical Features

<b>Installation</b>	Recessed Wall
<b>Body Material</b>	Die cast Aluminum
<b>Sleeve Material</b>	PVC
<b>Diffuser</b>	Tempered Glass
<b>Ingress Protection</b>	IP65
<b>Weight</b>	1 kg
<b>Dimension</b>	As per drawing

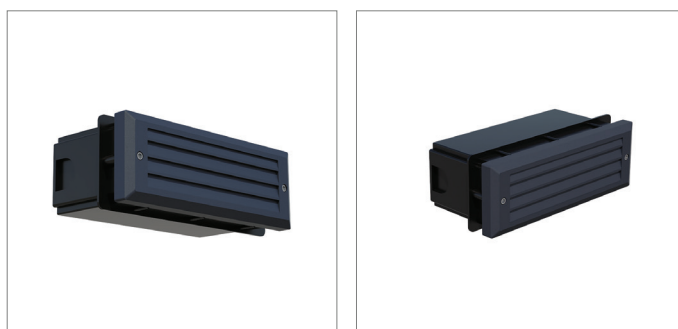
# CRATE SERIES - 107106



## ORDER INFORMATION

Art. No.	Wattage (W)	Input (V)	Beam Angle	Color Temperature (CCT)	Lumen	Finish
10710632707001	10W	220-240V AC	70°	2700K	686lm	Textured Grey
10710633007001				3000K	700lm	
10710634007001				4000K	728lm	
10710635007001				5000K	757lm	

## Product Photos



## Accessories



## Application

