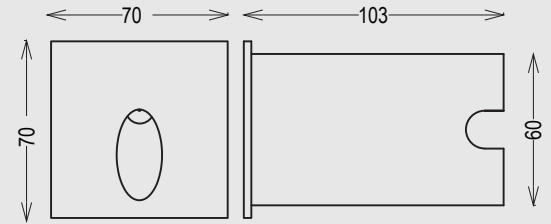
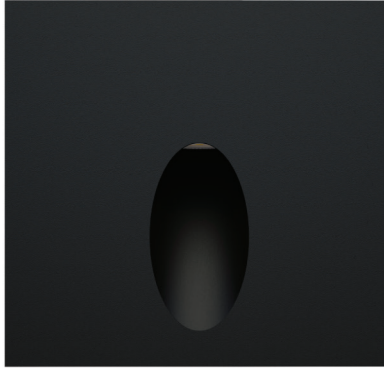


## LED RECESSED WALL LIGHT



### Description

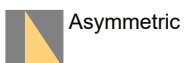
Recessed outdoor path marker wall light, a drop of light in and around the resin-potted aluminum casing. The power LED source emits a discreet yet evocative light that perfectly reveals the lines of an outdoor staircase in the dark. Installed close to the ground, it casts light circles onto the surface below while decorating it with style. The product comes in a textured dark grey finish so any other finish is subjected to min quantity of order. This series is a sealing system for power supply cables preventing corrosion of internal components. This product is suitable to illuminate indoor/outdoor, residential spaces and hotels.

### Correlated Color Temperature (CCT)

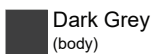


\*Other color temperatures (CCT) can be made as per order.

### Beam Angle



### Color Finish



### Electrical Features

<b>Wattage</b>	3W
<b>Light Source</b>	CREE LED
<b>Output Lumen</b>	240lm
<b>Input Voltage</b>	220-240V AC, 50-60Hz
<b>Color Rendering Index</b>	CRI >80
<b>LED Life Span</b>	>50,000Hrs
<b>Control</b>	ON / OFF

### Mechanical Features

<b>Installation</b>	Recessed Wall
<b>Body Material</b>	Extruded Aluminum
<b>Diffuser</b>	Clear Tempered Glass
<b>Ingress Protection</b>	IP65
<b>Impact Protection</b>	IK 06
<b>Cutout</b>	Ø57 mm
<b>Dimension</b>	W70 x D70 x H45 mm
<b>Sleeve Size</b>	Ø60 x H103mm

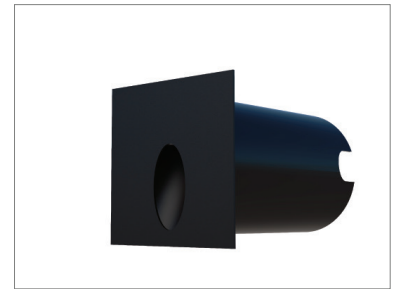
# BURACO SERIES - 107118



## ORDER INFORMATION

Art. No.	Wattage (W)	Input (V)	Beam Angle	Color Temperature (CCT)	Lumen	Finish
10711832737102	3W	220-240V AC	Asymmetric	2700K	235lm	Dark Grey
10711833037102				3000K	240lm	
10711834037102				4000K	250lm	
10711835037102				5000K	260lm	

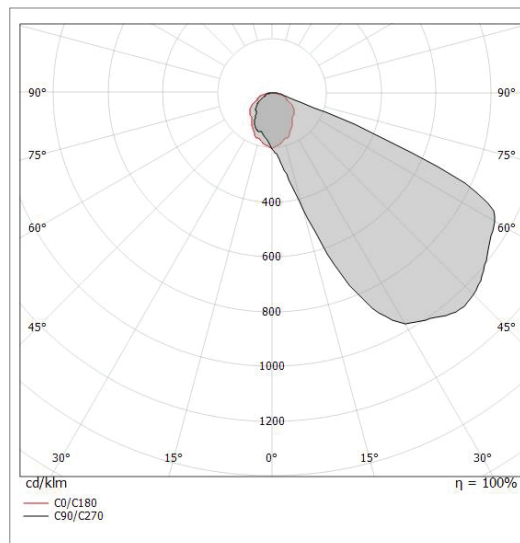
## Product Image



## Accessories

SLEEVE	CABLE CONNECTOR
	
PVC Included	IP68 Sold Separately

## Application



Distance [m]	Cone diameter [m]	E(0°) E(C0)	52.2°	
0.5	1.29	E(0°) E(C0)	52.2°	96 11
1.0	2.58	E(0°) E(C0)	52.2°	24 3
1.5	3.87	E(0°) E(C0)	52.2°	11 1
2.0	5.16	E(0°) E(C0)	52.2°	6 1
2.5	6.45	E(0°) E(C0)	52.2°	4 0
3.0	7.74	E(0°) E(C0)	52.2°	3 0
Distance [m]		Cone diameter [m]		illuminance [lx]
— C0/C180 (Half-peak divergence: 104.4°)				