

ELECTRICAL FEATURES

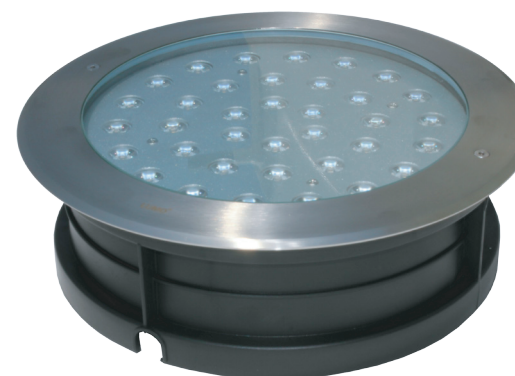
LED CHIP	SMD, CREE
TOTAL LUMEN OUTPUT	3240LM Warm White
DIMMABILITY	No
POWER	36W
POWER SUPPLY	220 - 240V AC, 50 - 60Hz
BEAM ANGLE	45°
LIFE SPAN	>40,000hrs
CRI	>80



MECHANICAL FEATURES

PACKING SIZE L X W X H/PCS.	HOLE SIZE	INSTALLATION	WEIGHT	PROTECTION	FRAME MATERIAL	DIFFUSER	BODY MATERIAL
325x325x115mm	Ø300 x H120mm	Recessed Inground	5.4kg	IP67	Stainless Steel 316	Tempered Glass	Die casting Aluminum

PRODUCT IMAGE



AVAILABLE COLOR TEMPERATURE



APPLICATION PHOTO



GENERAL FEATURES

This LED uplight is suitable for highlighting objects such as trees, columns or walls.

Easy installation using an anti-corrosion burial sleeve.

Protected from temporary immersion in water.

Drive over up to 1000kg.

2D LAYOUT

