

LED RECESSED WALL LIGHT



Description

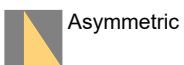
This outdoor recessed lighting fixtures characterized by either Asymmetrical beam angle or diffused beam spread. Both Available in two sizes, they are designed for lighting stairs, driveways and walkways with indirect light without glaring. The body and is made of high oxidation resistant Die casting aluminum which is subjected to powder coated body protected against UV rays, guaranteeing maximum protection over the years. Silicone gaskets around the light fixture ensure maximum sealing in all operating and humid conditions. The diffuser in micro-prism tempered glass, to assure a uniform distribution of light, is fixed by silicon directly to the body of the light. The product is installed in a rough-in housing made of PVC which is included in each order.

Correlated Color Temperature (CCT)

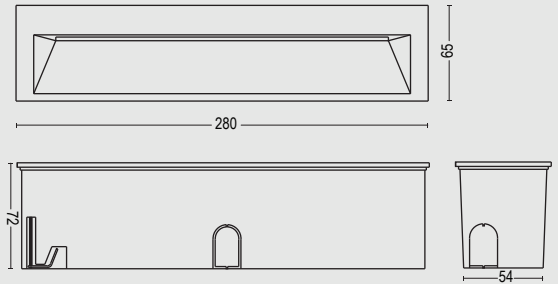


*Other color temperatures (CCT) can be made as per order.

Beam Angle



Color Finish



Electrical Features

Wattage	10W
Light Source	CREE SMD LED
Output Lumen	800lm (3000K)
Input Voltage	220-240V AC
Color Rendering Index	CRI >90
LED Life Span	>50,000Hrs
Control	ON / OFF

Mechanical Features

Installation	Recessed Wall Installation
Body Material	Die Cast Aluminum
Diffuser	Micro-prism Glass
Sleeve Material	PVC (included)
Ingress Protection	IP66
Impact Protection	IK 08
Weight	Net Wt. 0.70 kg
Dimension	L280 x D72 x H65mm

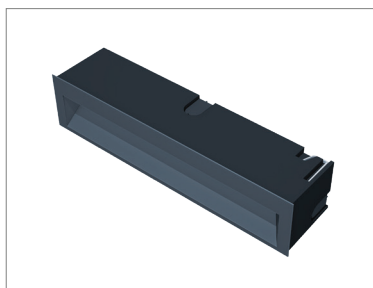
STEWAL SERIES - 107110





ORDER INFORMATION

Art. No.	Wattage (W)	Input (V)	Beam Angle	Color Temperature (CCT)	Lumen	Finish
10711032737102	10W	220-240V AC	Asymmetric	2700K	784lm	Textured Dark Grey
10711033037102				3000K	800lm	
10711034037102				4000K	832lm	
10711035037102				5000K	865lm	

Product Image



Accessories

<p>CABLE CONNECTOR</p>  <p>IP68 Sold Separately</p>	<p>BACK SLEEVE (INSTALLATION HOUSING)</p>  <p>PVC Included</p>
--	---

Application



Light Distribution

