

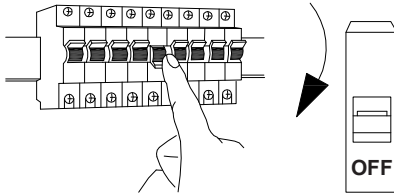
LED PENNISETUM LIGHT - WITH SPIKE

INSTALLATION INSTRUCTIONS

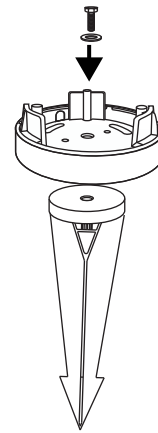
LUMO[®]

PART NO.	POWER	INPUT VOLTAGE	IP RATING
LU002DPFL-R01	2W	24V DC	IP67

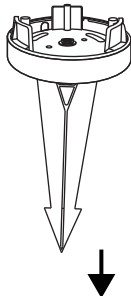
- ① Switch off the main power before doing any installation or maintenance process.



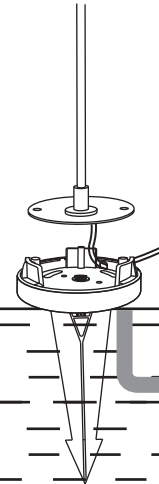
- ② Fix the Bracket in to the PVC spike.



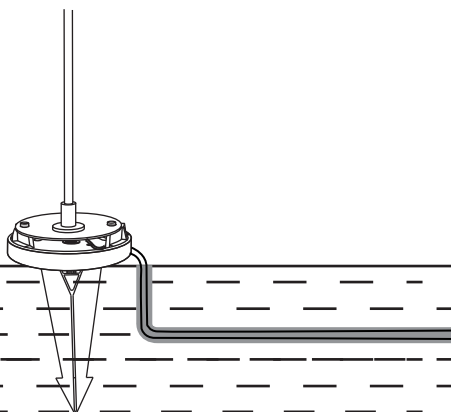
- ③ Put the PVC spike to the place that you like to have the light almost 40cm away from the object or tree.



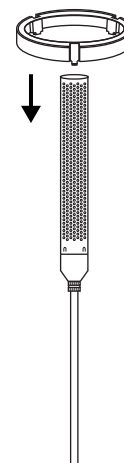
- ④ Put the light back in the base plate.



- ⑤ Do the connection using waterproofing connectors. (ask LUMO about proper connectors).

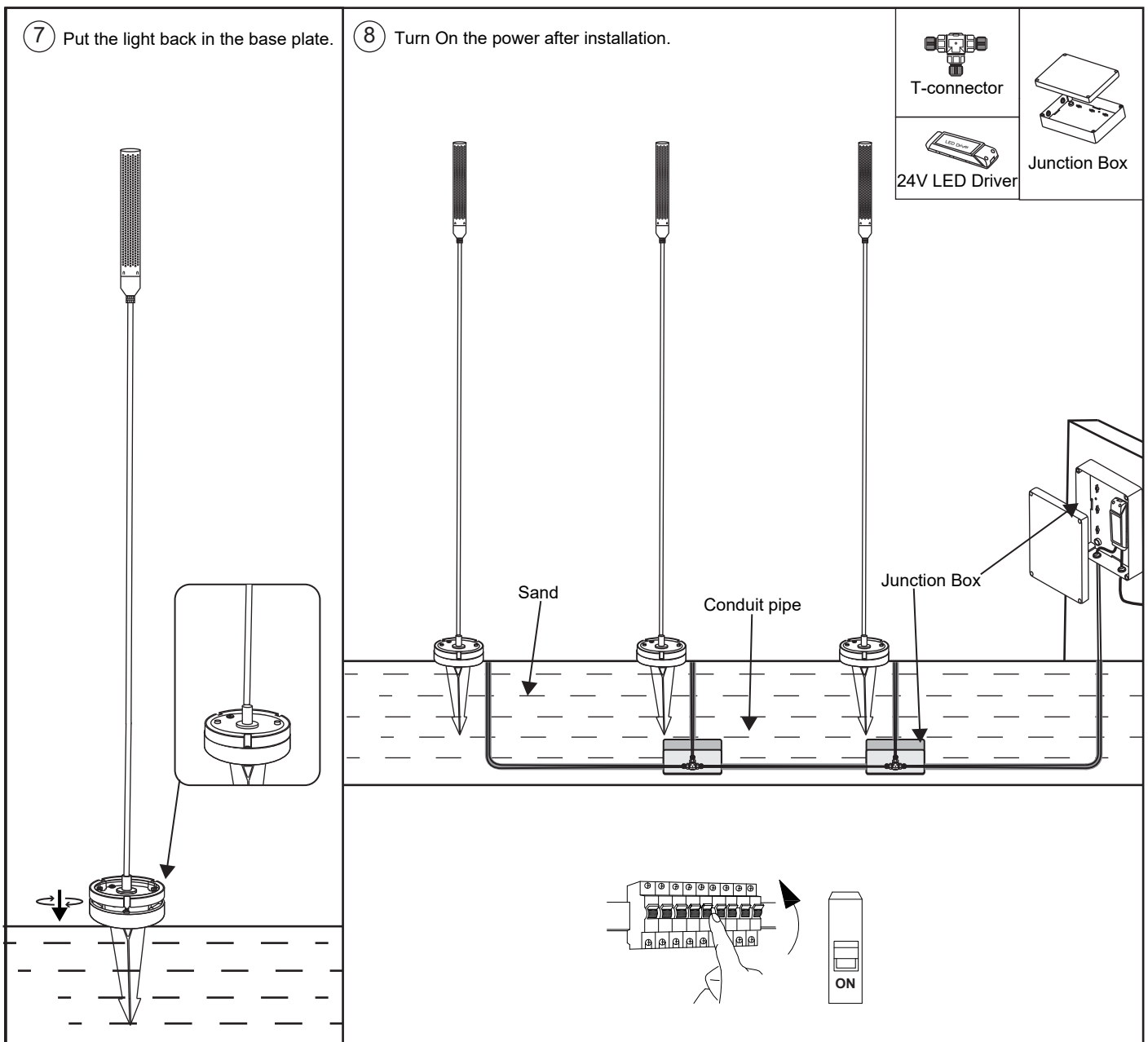


- ⑥ Put the light back in the base plate.



LED PENNISETUM LIGHT - WITH SPIKE INSTALLATION INSTRUCTIONS

LUMO[®]



Note : This product is out of warranty if :

- 1-The installation method is not followed as per instruction-sheet
- 2-Installation material is not used properly
- 3-Waterproofing is not done as per instruction method
- 4-Waterproofing connectors are not used
- 5-The correct voltage is not used
- 6- If the light is permanently submerged in water
- 7- If drainage is not provided to drain the rain water

Note : To prevent any risk while doing installation of this product an electrical engineer need to install / supervise installation team.

WARNINGS

This light is a low voltage light so contact LUMO for a proper driver / Transformer to be used.
All electrical works must be done by a qualified electrician.
Turn off electrical power to all affected circuits before installation or servicing.
For any technical support contact LUMO[®] experts in info@lumo.ae

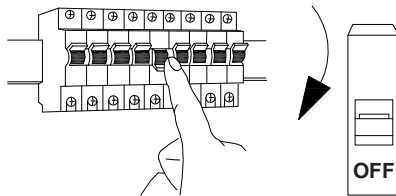
LED PENNISETUM LIGHT - WITH BRACKET

INSTALLATION INSTRUCTIONS

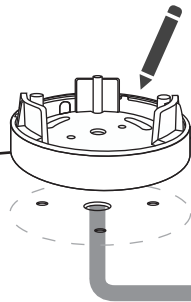


PART NO.	POWER	INPUT VOLTAGE	IP RATING
LU002DPFL-R01	2W	24V DC	IP67

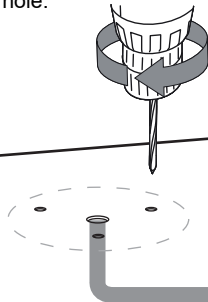
- ① Switch off the main power before doing any installation or maintenance process.



- ② Place the base on the concrete where you are going to place the light to mark the base with a marker.



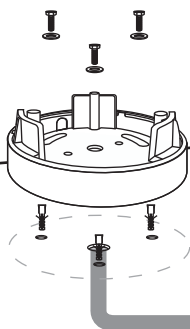
- ③ Remove the base and drill the concrete in 4 mm size and insert the fishers in the hole.



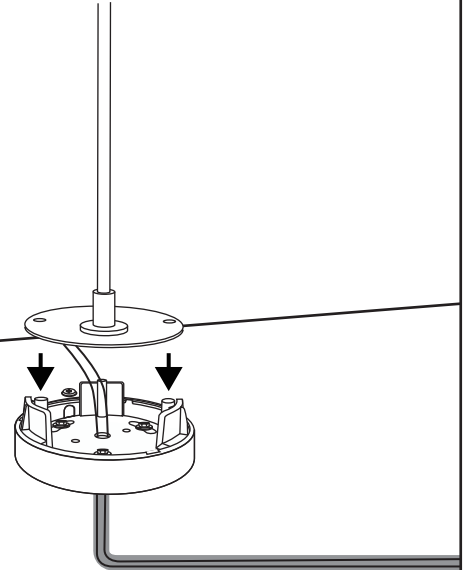
- ④ Fasten the screws and fix the base.

⌀ x3

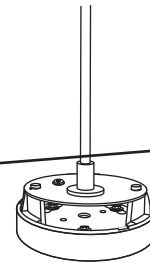
⊔ x3



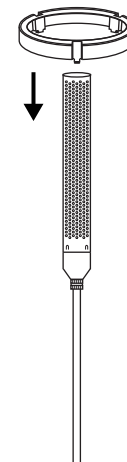
- ⑤ Do the connection using waterproofing connectors. (ask LUMO about proper connectors).



- ⑥ Put the light back in the base plate.

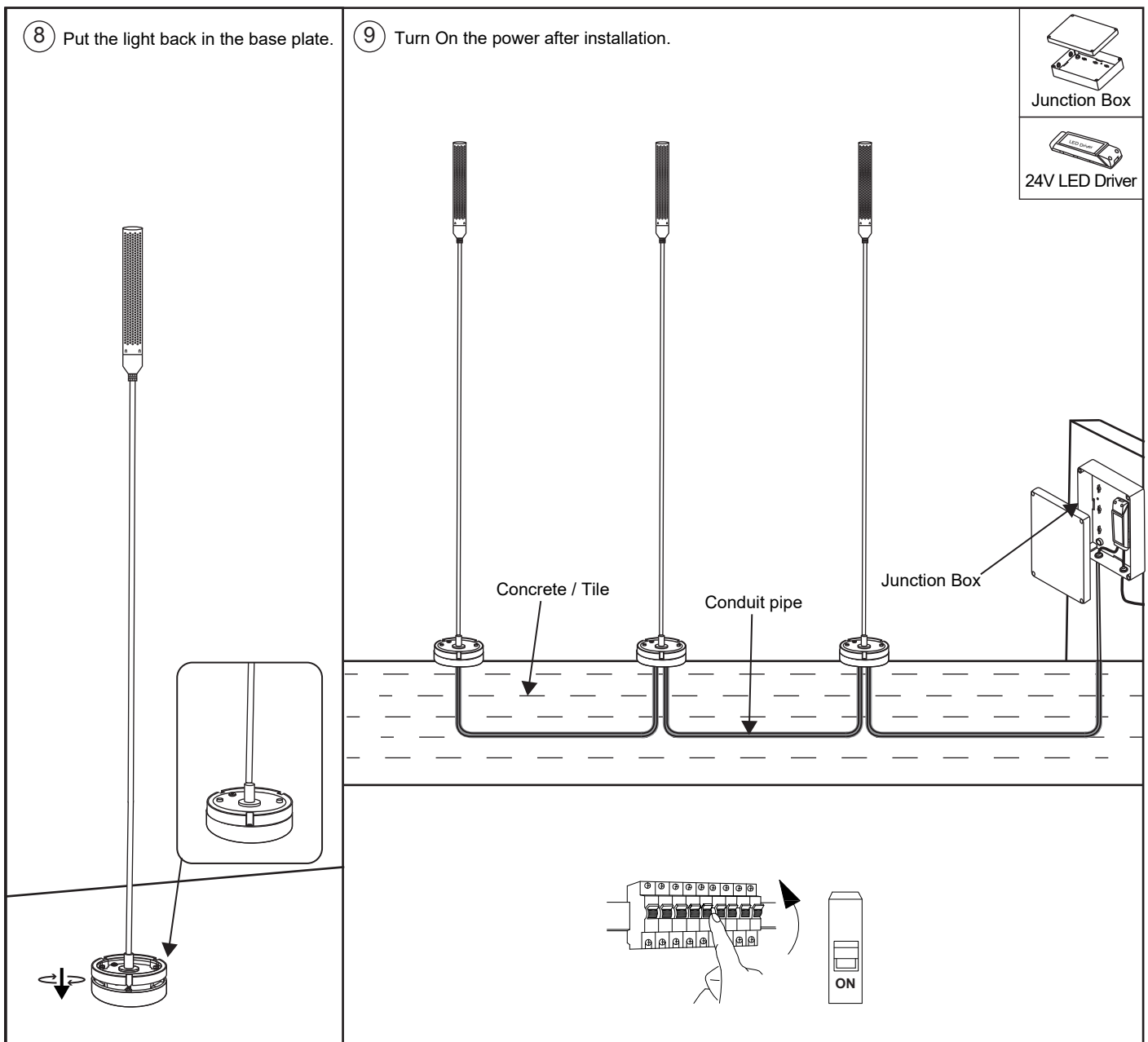


- ⑦ Put the light back in the base plate.



LED PENNISETUM LIGHT - WITH BRACKET INSTALLATION INSTRUCTIONS

LUMO®



Note : This product is out of warranty if :

- 1-The installation method is not followed as per instruction-sheet
- 2-Installation material is not used properly
- 3-Waterproofing is not done as per instruction method
- 4-Waterproofing connectors are not used
- 5-The correct voltage is not used
- 6- If the light is permanently submerged in water
- 7- If drainage is not provided to drain the rain water

Note : To prevent any risk while doing installation of this product an electrical engineer need to install / supervise installation team.

WARNINGS

This light is a low voltage light so contact LUMO for a proper driver / Transformer to be used.
All electrical works must be done by a qualified electrician.
Turn off electrical power to all affected circuits before installation or servicing.
For any technical support contact LUMO® experts in info@lumo.ae