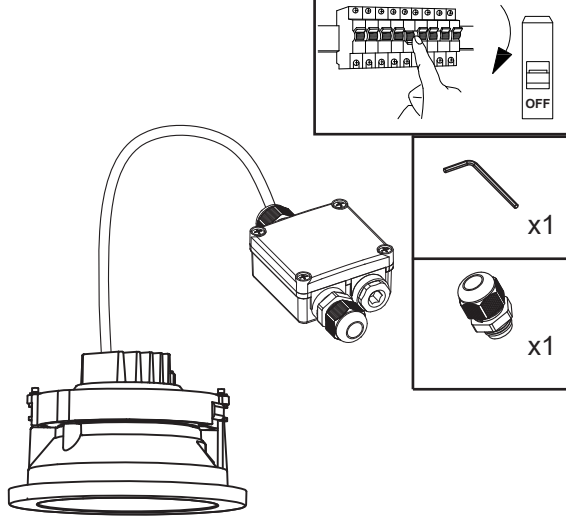


RECESSED MOUNTED DOWN LIGHT INSTALLATION INSTRUCTIONS

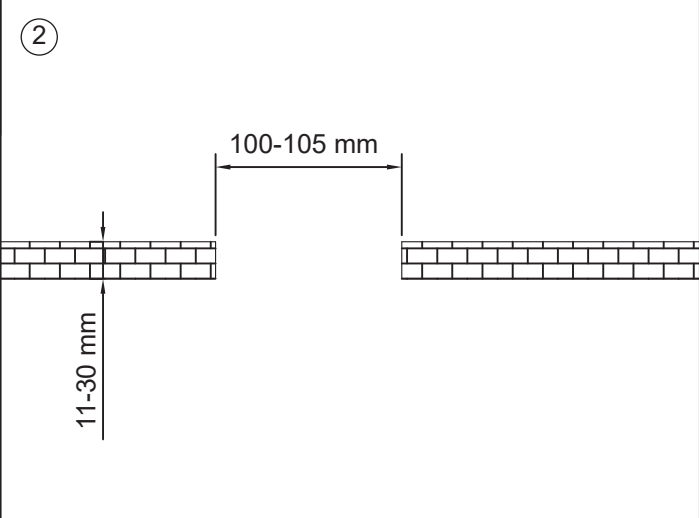
PART NUMBER	POWER	INPUT	DIMENSION	IP RATING
LU010WPCL-RC01	10W	220-240VAC, 50/60Hz	Ø120 x H90 mm	IP65

①



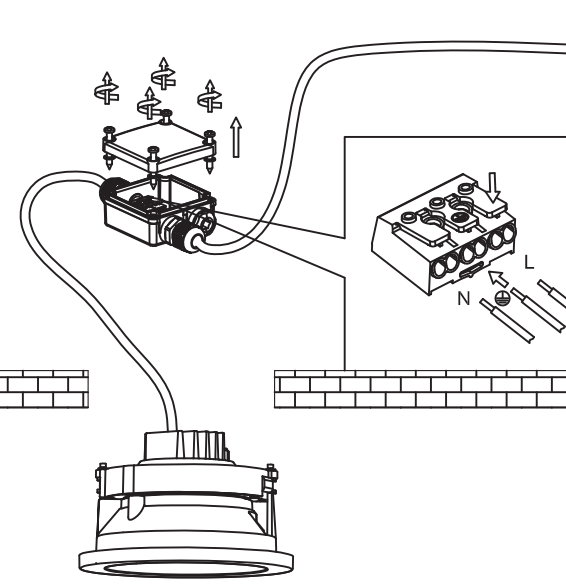
Make sure you the off the main power before doing any electrical job.

②



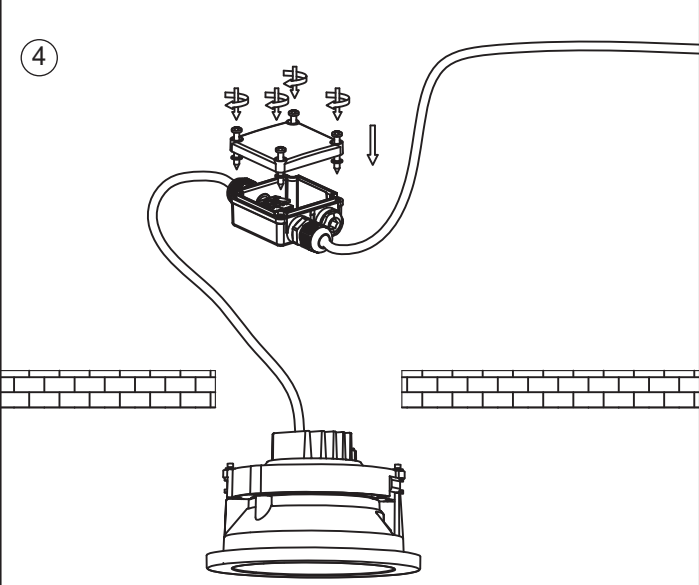
Cut the ceiling as per cut size provided.

③



Open the provided junction box and do all the connections inside the waterproof connector.

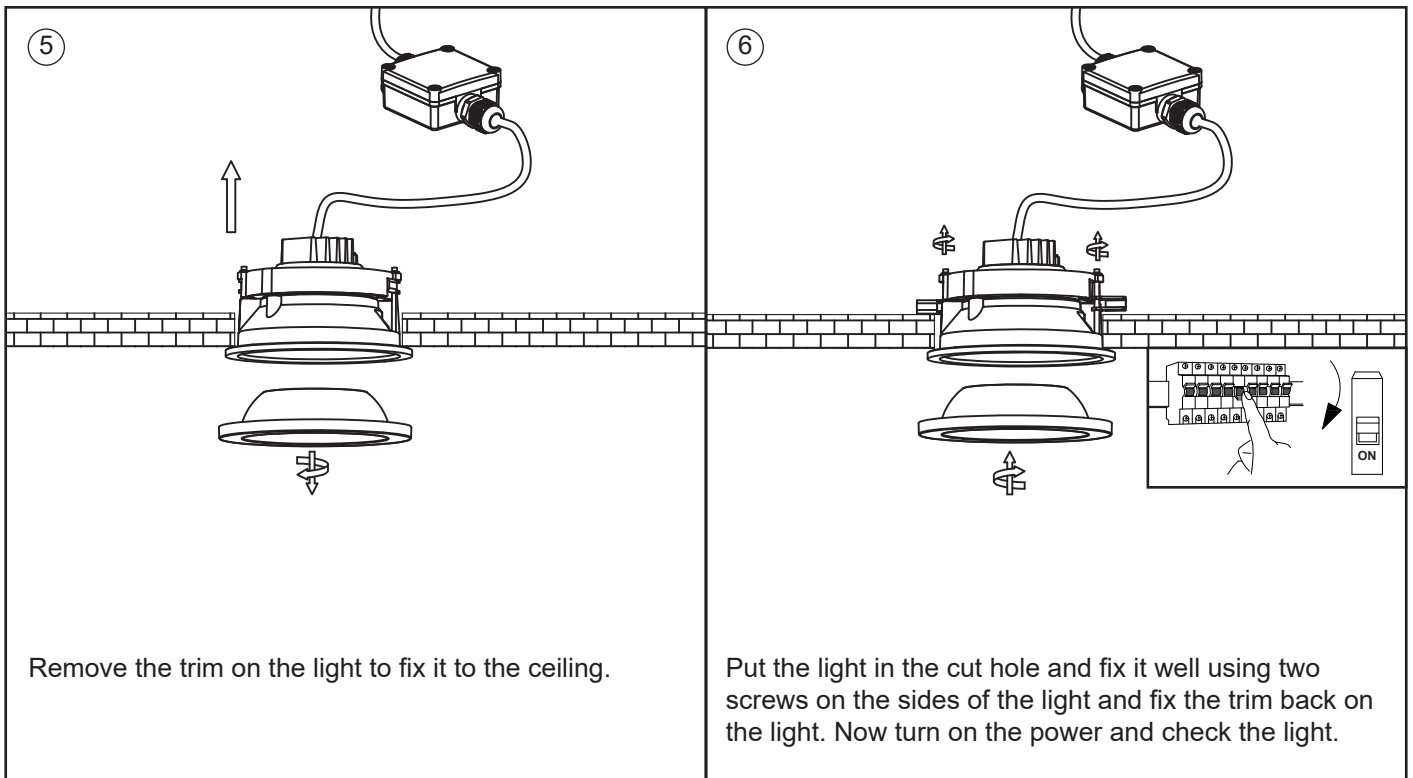
④



Close the junction box and keep it up in the ceiling.

RECESSED MOUNTED DOWN LIGHT INSTALLATION INSTRUCTIONS

LUMO[®]



Note : This product is out of warranty if :

- 1-The installation method is not followed as per instruction-sheet
- 2-Installation material is not used properly
- 3-Waterproofing is not done as per instruction method
- 4-Waterproofing connectors are not used
- 5-The correct voltage is not used
- 6- If the light is permanently submerged in water
- 7- If drainage is not provided to drain the rain water

Note : To prevent any risk while doing installation of this product an electrical engineer need to install / supervise installation team.

WARNINGS

This light is a low voltage light so contact LUMO for a proper driver / Transformer to be used.
All electrical works must be done by a qualified electrician.
Turn off electrical power to all affected circuits before installation or servicing.
For any technical support contact LUMO[®] experts in info@lumo.ae