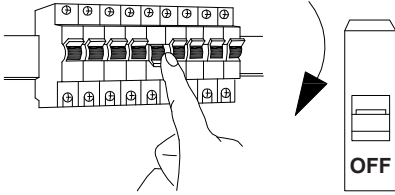


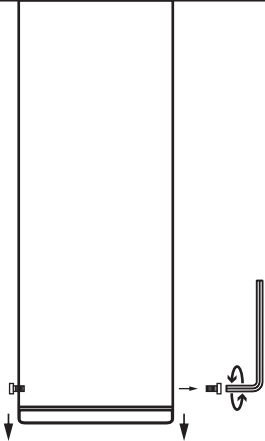
# LED BOLLARD LIGHT INSTALLATION INSTRUCTIONS



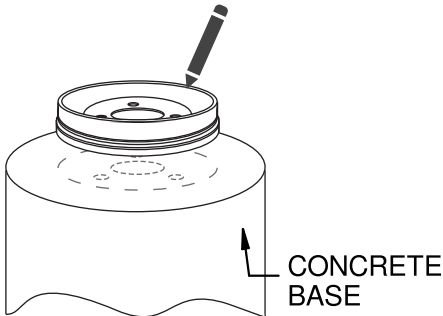
PART NAME	POWER	INPUT VOLTAGE	MATERIAL	IP RATING
LU025BLIT-CL02	25W	100-240V AC	Die-cast Aluminum + PMMA Diffuser	IP65



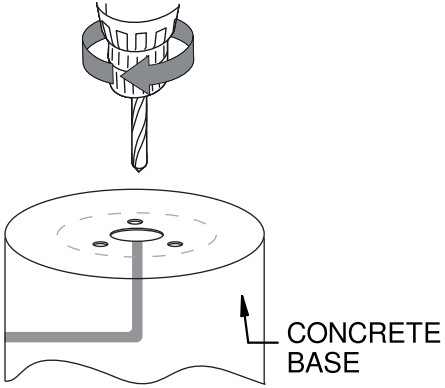
1 Switch of the main power before installation.



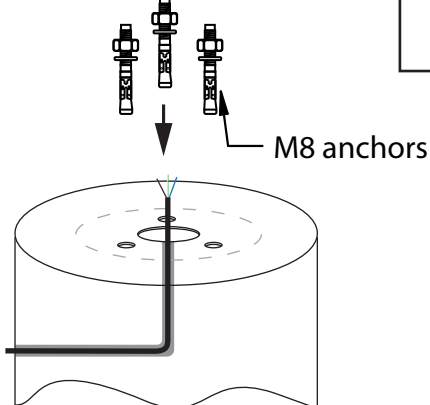
2 Remove the nuts from the base, using the Allen key



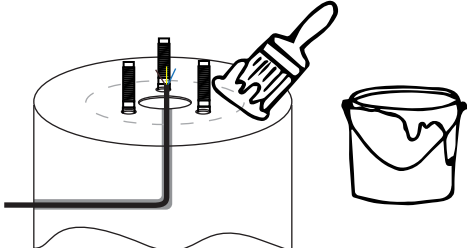
3 Place the base on the concrete where you are going to place the bollard light to mark the base with a marker.



4 Remove the base and drill the concrete with M8 size.



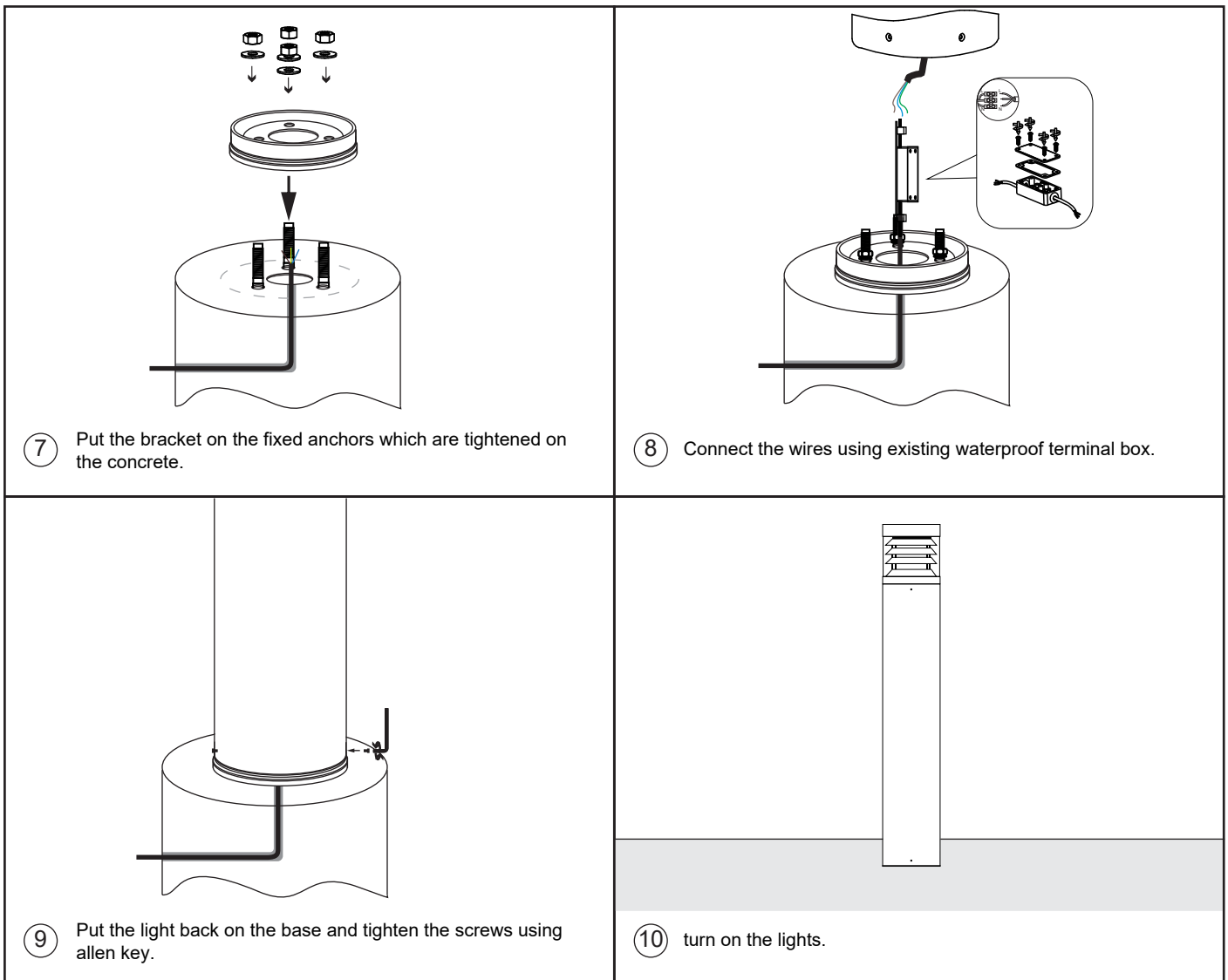
5 Put the M8 anchors in the drilled holes and tighten them well



6 Paint the concrete base with marine-grade paint or use epoxy to make the base water and salt proof to prevent the base be in touch with the ground directly.

# LED BOLLARD LIGHT INSTALLATION INSTRUCTIONS

**LUMO**<sup>®</sup>



Note : This product is out of warranty if :

- 1-The installation method is not followed as per instruction-sheet
- 2-Installation material is not used properly
- 3-Waterproofing is not done as per instruction method
- 4-Waterproofing connectors are not used
- 5-The correct voltage is not used
- 6- If the light is permanently submerged in water
- 7- If drainage is not provided to drain the rain water

Note : To prevent any risk while doing installation of this product an electrical engineer need to install / supervise installation team.

## **WARNINGS**

This light is a low voltage light so contact LUMO for a proper driver / Transformer to be used.  
All electrical works must be done by a qualified electrician.  
Turn off electrical power to all affected circuits before installation or servicing.  
For any technical support contact LUMO<sup>®</sup> experts in [info@lumo.ae](mailto:info@lumo.ae)