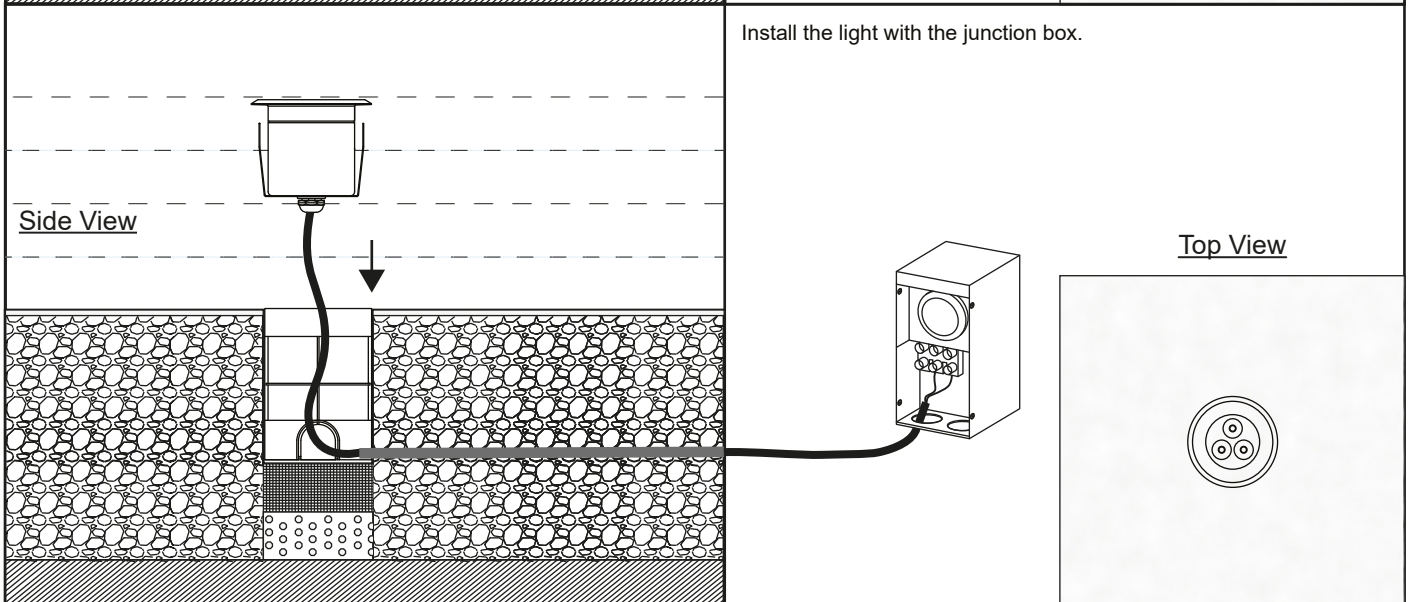
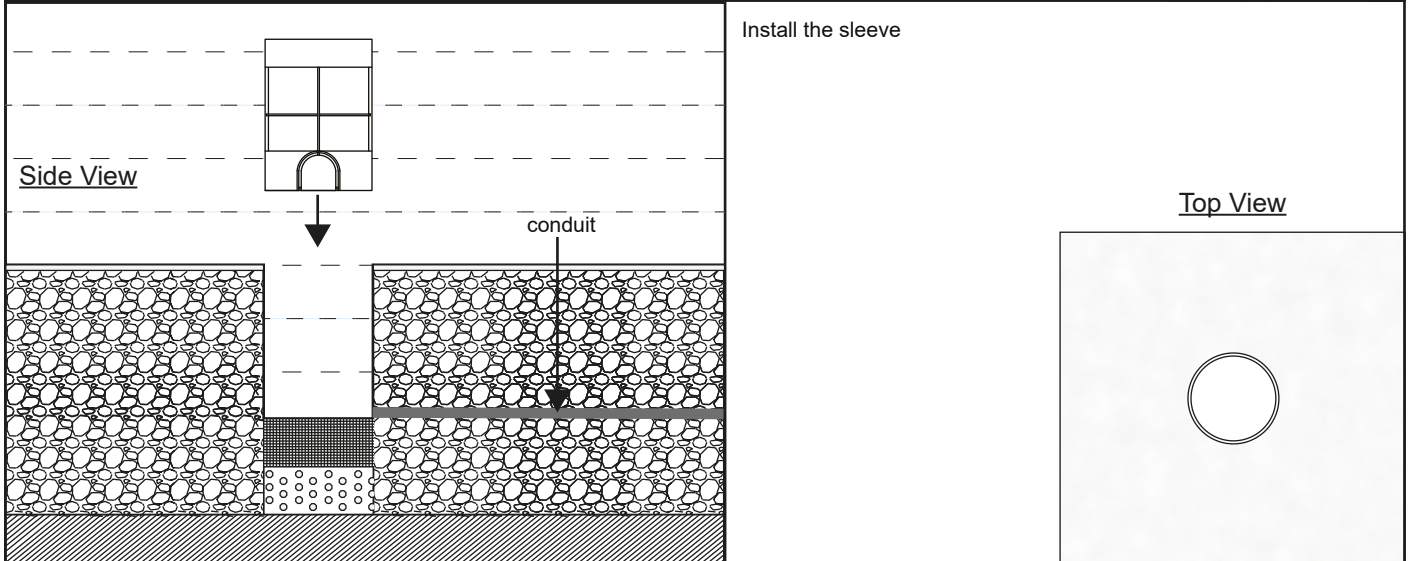
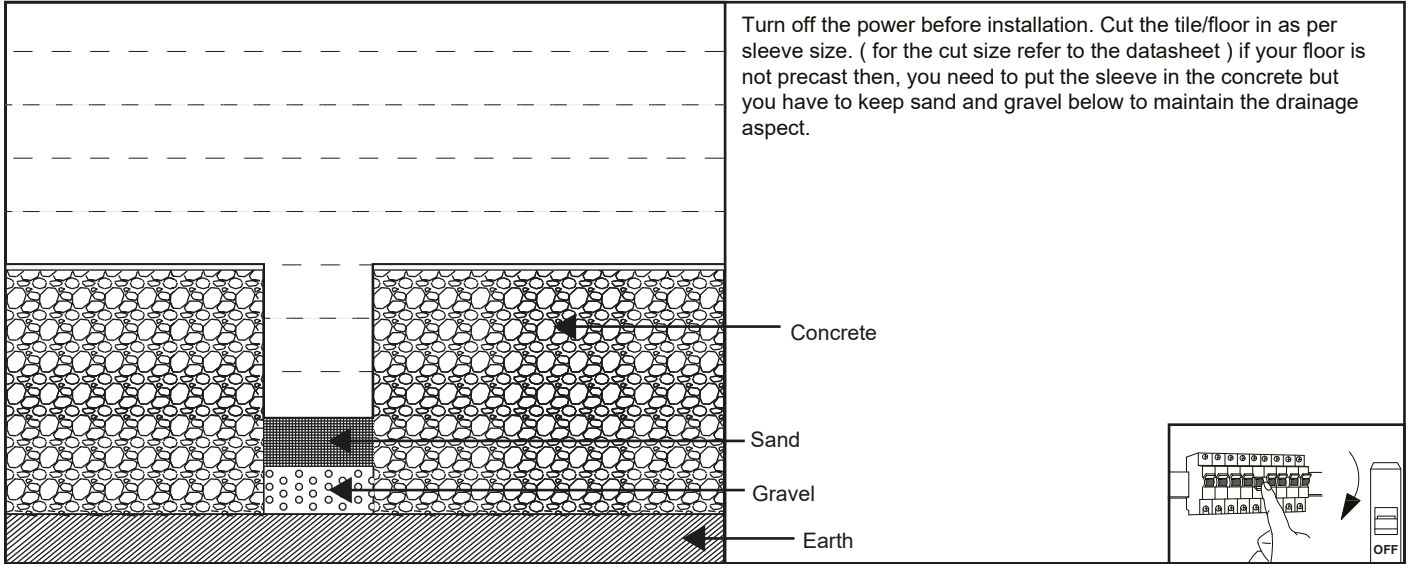


RECESSED LED UNDERWATER LIGHT INSTALLATION INSTRUCTIONS

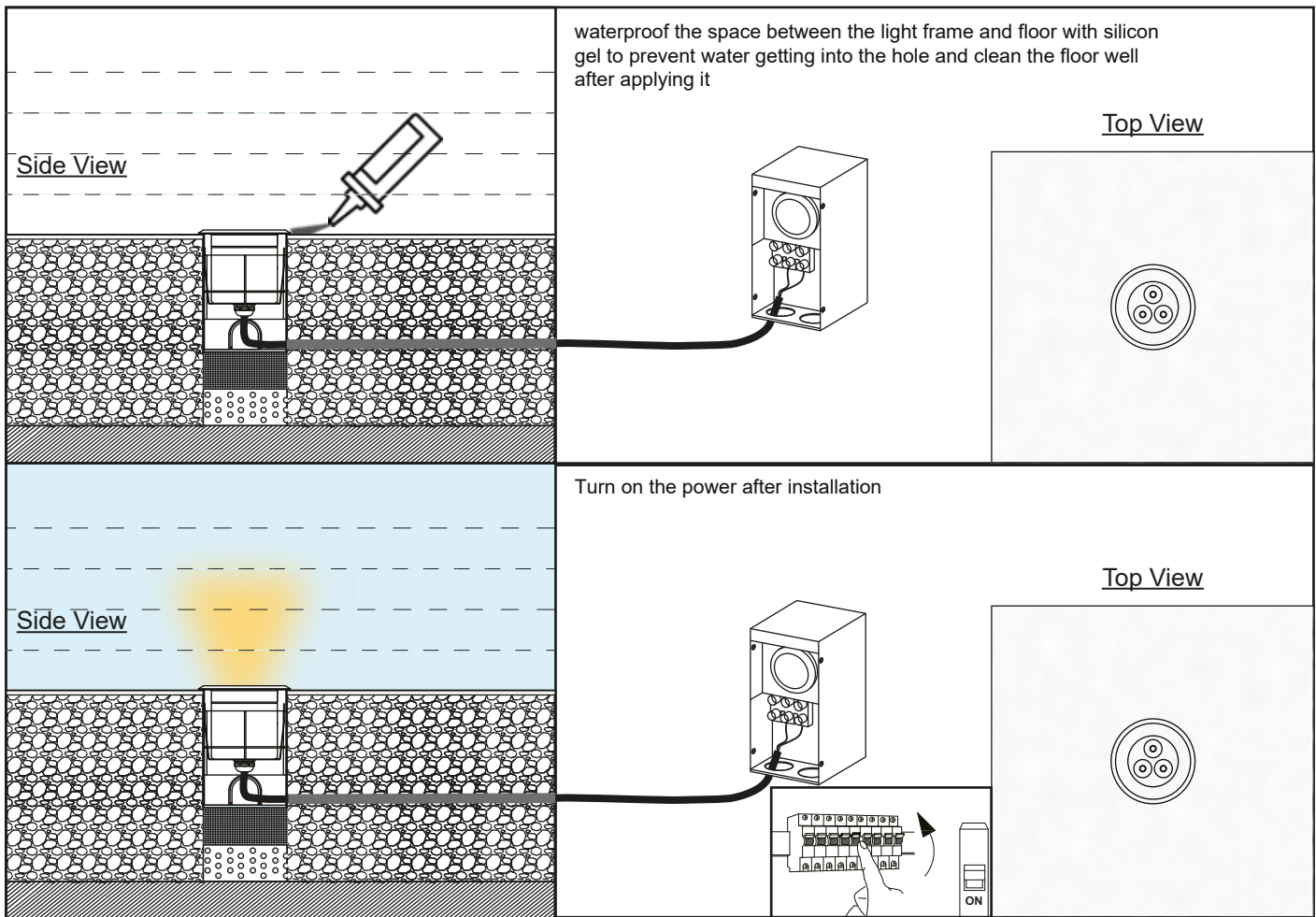


PART NO.	WATTAGE	INPUT VOLTAGE	IP RATING
LU008UW-R01	8W	12V AC/DC or 24V DC	IP68



RECESSED LED UNDERWATER LIGHT INSTALLATION INSTRUCTIONS

LUMO®



Note : This product is out of warranty if :

- 1-The installation method is not followed as per instruction-sheet
- 2-Installation material is not used properly
- 3-Waterproofing is not done
- 4-Waterproofing connectors are not used

- 5-The correct voltage is not used
- 6-An electrical engineer need to install / supervise installation team
- 7- If the light is permanently submerged in water
- 8- If drainage is not provided to drain the rain water

WARNINGS

This light is a low voltage light so contact LUMO for a proper driver / Transformer to be used.
All electrical works must be done by a qualified electrician.
Turn off electrical power to all affected circuits before installation or servicing.
For any technical support contact LUMO® experts in info@lumo.ae