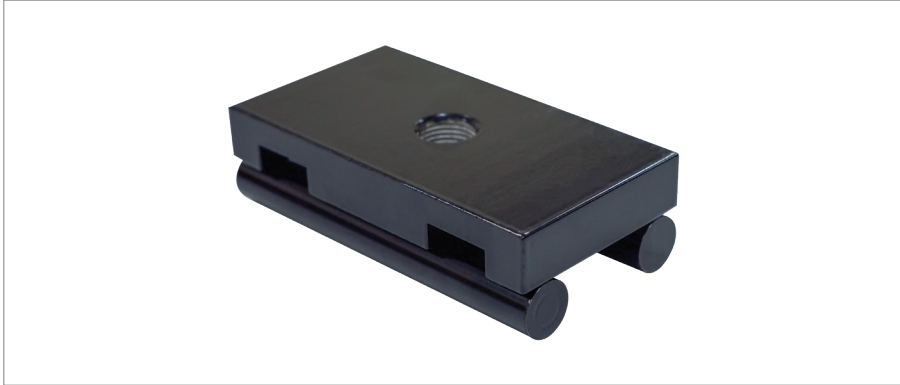
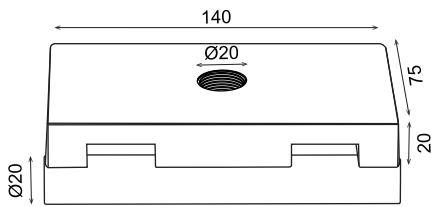


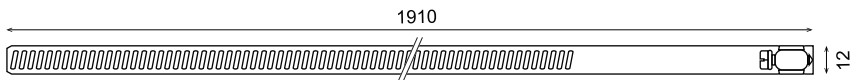
TREE MOUNTING BRACKET WITH STRAP ACCESSORIES KIT



Bracket Dimension



Strap Dimension



Product Images



Features

- Ratcheting devices are sturdy and easy to secure.
- Die-cast Aluminum mounting plate will not bend or break.
- Straps are easily adjusted during periodic maintenance to prevent damage to the tree.
- 1910 mm two straps accommodate trees up to 762 mm diameter.
- Suggested for use with beam spread lights.
- 3 years warranty on mount and 1 year warranty on straps.
- No screws or hardware to damage trees.
- Straps are easily adjusted so (during maintenance checks) they can be loosened to accommodate tree growth.

Bracket Features

Bracket Material	Die-cast Aluminum
Color Finish	Matt Black
Size of Bracket	As per drawing

Strap Features

Strap Material	Stainless steel
Color Finish	Stainless steel
Size of Bracket	As per drawing